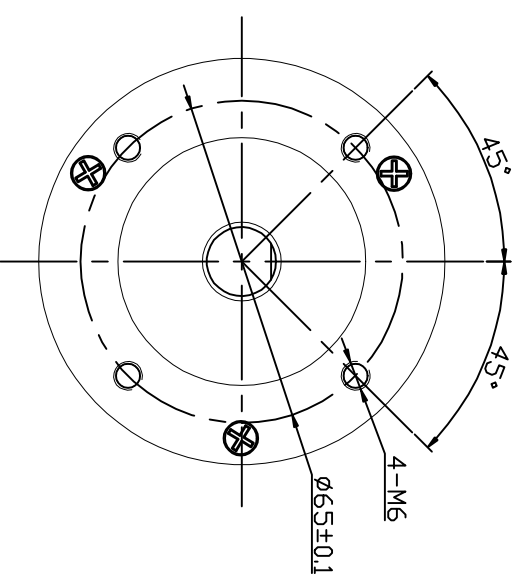
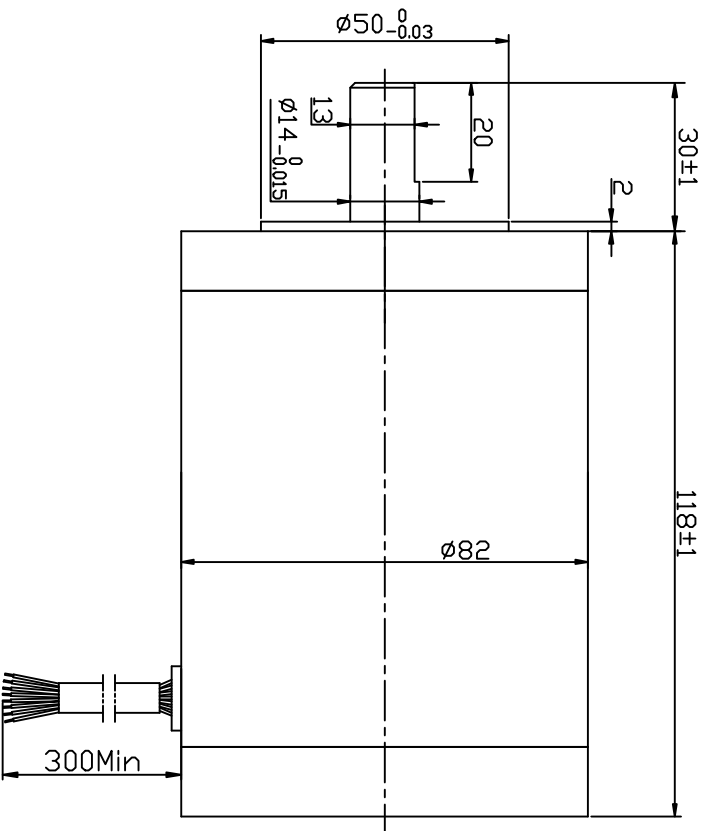


Dimension:  
Unit:mm



MANUFACTURER MODEL	JK80BLS03
NUMBER OF POLES	4
PHASE TO PHASERESISTANCE	0.35 OHMS
NOMINAL VOLTAGE	48 VDC
ND LOAD SPEED	3700±10% RPM
ND LOAD CURRENT	1 Amps Max.
RATED TORQUE	1.05 N-m
RATED SPEED	3000±10% RPM
OUTPUT POWER	330 W
BACK EMF CONSTANT	13 V/KRPM
TORQUE CONSTANT	0.124 N-m/A
INSULATION CLASS	B

ROTATION: CCW SEE FROM LEAD END

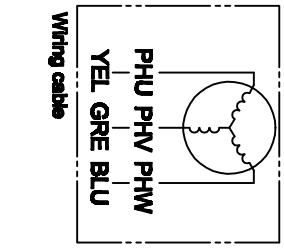
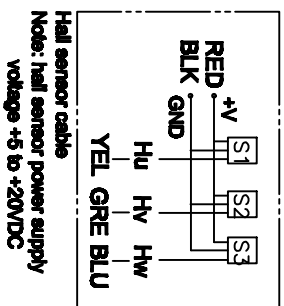
ELECTRICAL CONNECTION TABLE	
+5V	RED 紅
HALL U	YEL 黃
HALL V	GRE 綠
HALL W	BLU 藍
GND	BLK 黑
PHASE U	YEL 黃
PHASE V	GRE 綠
PHASE W	BLU 藍

REV. QTY:	No.	SIG.	DATE
DESIGN	W/H	18.01.08	STD.
CHECK			
PROC.			

CLS.MAK	WEIGHT	SCALE

www.jkongmotor.com
--------------------

Connection diagram:



Title:

Specification

JK80BLS03

常州精控电机电器有限公司