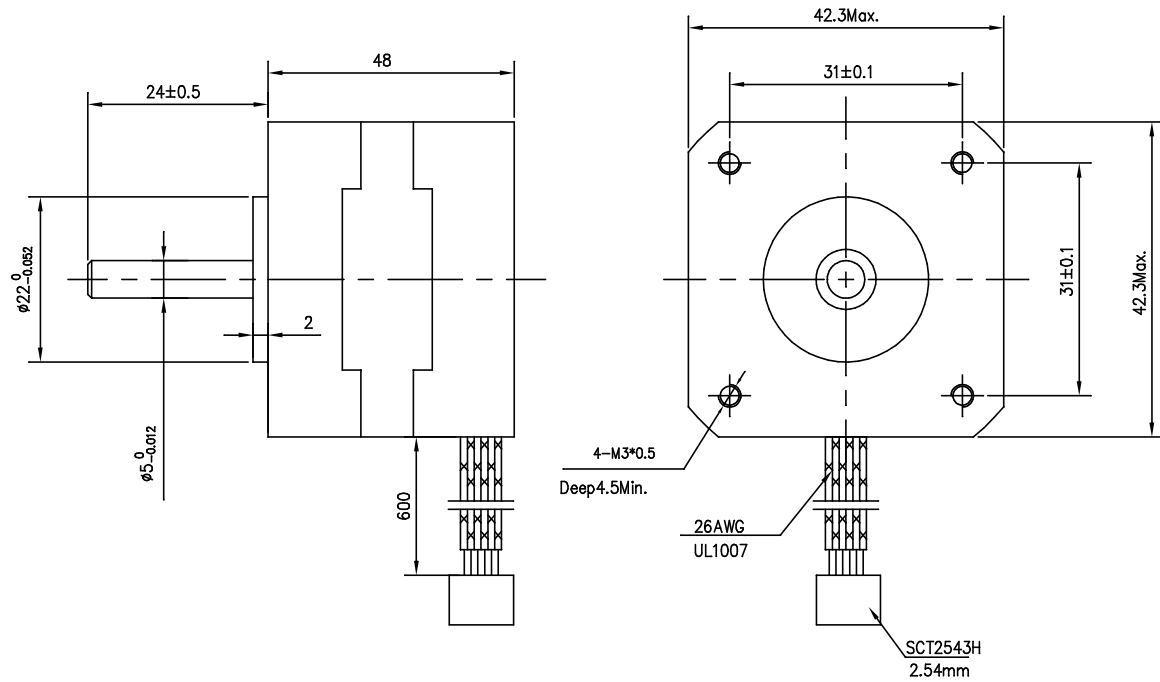
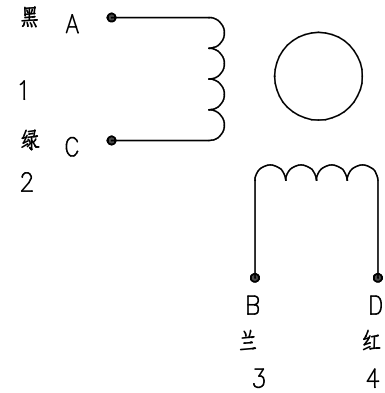


Dimension:  
Unit=mm



Wiring Diagram:



Specifications:

相数	Phase	2		Comment
步距角	Step Angle	1.8	deg.	
电压	Voltage	2.8	V	
相电流	Current	1.68	A	
相电阻	Resistance	1.65	$\Omega$	
相电感	Inductance	2.8	mH	
静力矩	Holding Torque	4.4	kg.cm	
绝缘等级	Insulation Class	B		
重量	Mass	0.34	kg	

REV.	QTY.	No.	SIG.	DATE	Title:		
DESIGN			STD.		Specification		
CHECK					CLS.MAK	WEIGHT	SCALE
PROC.			APPR.		42HS48-1684-21A		
					JKMOTOR		
					PAGE: OF PAGES		