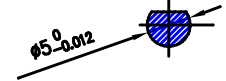
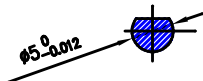
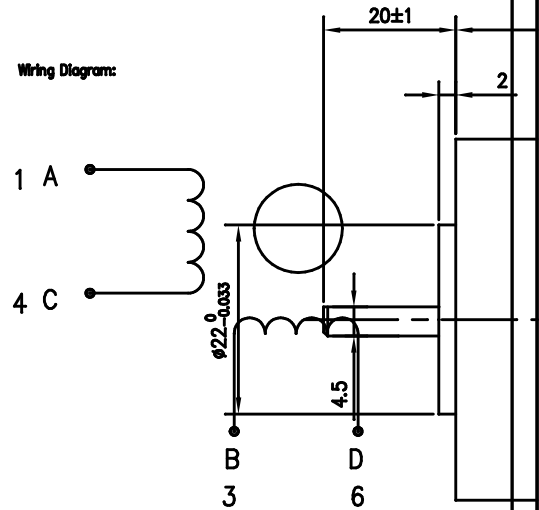
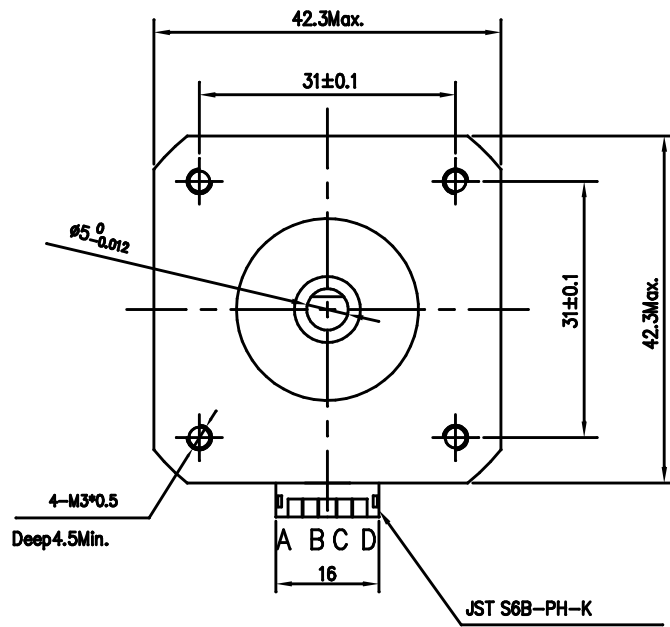
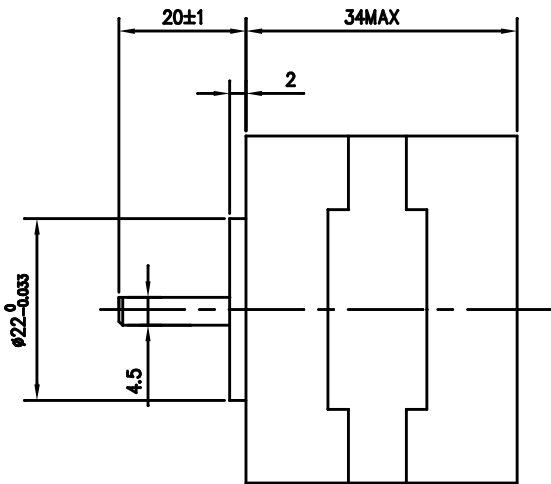


Dimension:
Unit=mm



Specifications:

相数	Phase	2		Comment
步距角	Step Angle	1.8	deg.	
电压	Voltage	4.83	V	
相电流	Current	0.84	A	
相电阻	Resistance	5.75±10%	Ω	
相电感	Inductance	9.3±20%	mH	
静力矩	Holding Torque	2.8	kg.cm	
绝缘等级	Insulation Class	B		
重量	Mass	0.24	kg	

					Title:		常州精控电机电器有限公司	
					Specification			
REV.	QTY.	No.	SIG.	DATE			K42HS34-0844YA-06F	
DESIGN	吴敏斌	20170310	STD.		CLS.MAK	WEIGHT	SCALE	
CHECK								
PROC.			APPR.		PAGE:		OF PAGES	
					www.kongmotor.com			